

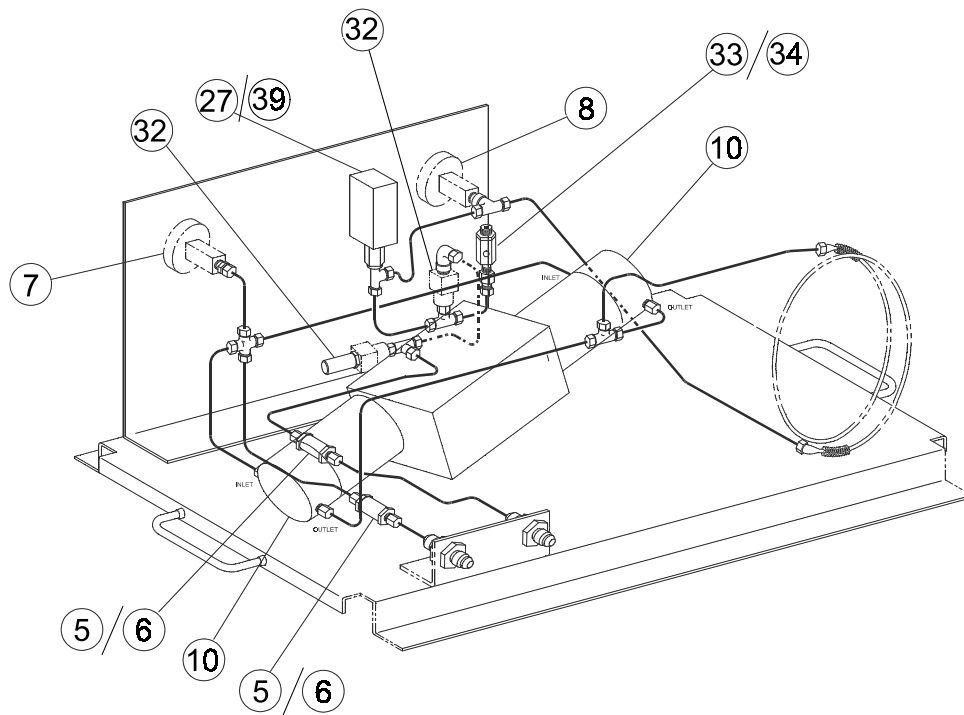
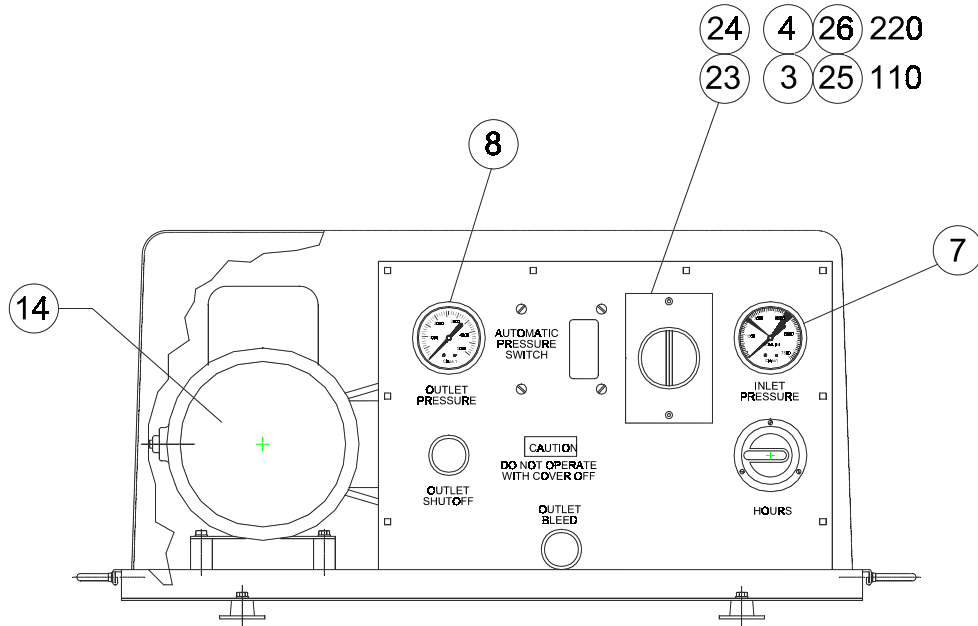


## Replacement Parts – 9000-00

Number	Description	Part #
1	Ball - Check valve (0.25" diameter)	2511-250
2	Back-up ring – Check valve (new style)	1690-01010
3	Coil - Under voltage, 110V (00)	5534-110
4	Coil - Under voltage, 220V (00)	5534-220
5	Filter – Complete assembly (in-line)	4419
6	Filter – Element replacement kit (in-line)	6451
7	Gauge – Pressure (inlet)	M-107003
8	Gauge – Pressure (outlet)	M-107002
9	Head assembly – Cylinder (old style)	05593
10	Head assembly – Cylinder (new style)	05961
11	Head only – Cylinder (new style)	6573
12	Installation tool – Piston seal (old style)	T-1203
13	Installation tool – Piston seal (new style)	T-1757
14	Motor	2551-125160L
15	O-ring – Check valve (old style)	1511-35
16	O-ring – Check valve (new style)	1511-164
17	O-ring, internal - Check valve (new style)	1511-25
18	Seal – Piston (new style)	5831
19	Seal – Piston (old style)	2512
20	Seat – Outlet check valve (new style)	6572
21	Spring – Check valve (old style)	2304
22	Spring – Check valve (new style)	6578
23	Switch – Complete assembly, 110V (00)	05838-1
24	Switch – Complete assembly, 220V (00)	05838-2
25	Switch – On/Off, 110V (00)	5533-110
26	Switch – On/Off, 220V (00)	5533-220
39*	Switch – Pressure (00) (New style)	4554
27	Switch – Pressure (00) (Old style)	2556-1
28	Valve – Inlet check assembly (old style)	05635
29	Valve – Inlet check fitting (new style)	6574
30	Valve – Outlet check fitting (old style)	2364
31	Valve – Outlet check fitting (new style)	6575
32	Valve – Outlet shutoff/Outlet bleed	2558-3
33	Valve – Pressure relief (2500 psi)	5001-1
34	Valve – Pressure relief (4800 psi)	5001-2

\* denotes out of sequence numbers

## Replacement Parts Layout – 9000-00





## Replacement Parts – 9000-A2

Number	Description	Part #
1	Ball – Check valve (0.25" diameter)	2511-250
2	Back-up ring - Check valve (new style)	1690-01010
5	Filter – Complete assembly (in-line)	4419
6	Filter – Element replacement kit (in-line)	6451
7	Gauge – Pressure (inlet)	M-107003
8	Gauge – Pressure (outlet)	M-107002
9	Head assembly - Cylinder (old style)	05593
10	Head assembly - Cylinder (new style)	05961
11	Head only – Cylinder (new style)	6573
12	Installation tool – Piston seal (old style)	T-1203
13	Installation tool – Piston seal (new style)	T-1757
14	Motor	2551-125160L
15	O-ring – Check valve (old style)	1511-35
16	O-ring – Check valve (new style)	1511-164
17	O-ring, internal – Check valve (new style)	1511-25
35*	Relay – SS, 110V (A2)	4617
36*	Relay – SS, 220V (A2)	4560
18	Seal – Piston (new style)	5831
19	Seal – Piston (old style)	2512
20	Seat – Outlet check valve (new style)	6572
21	Spring – Check valve (old style)	2304
22	Spring – Check valve (new style)	6578
37*	Switch – On/Off, 110V (A2)	4553
38*	Switch – On/Off, 220V (A2)	4552
39*	Switch – Pressure, high (A2)	4554
40*	Switch – Pressure, low (A2)	4555
28	Valve – Inlet check assembly (old style)	05635
29	Valve – Inlet check fitting (new style)	6574
30	Valve – Outlet check fitting (old style)	2364
31	Valve – Outlet check fitting (new style)	6575
32	Valve – Outlet shutoff/Outlet bleed	2558-3
33	Valve – Pressure relief (2500 psi)	5001-1
34	Valve – Pressure relief (4800 psi)	5001-2

\* denotes out of sequence numbers

## Replacement Parts Layout – 9000-A2

